



Vegetation Control Service, Inc.

2342 MAIN STREET
ATHOL, MA 01331
OFF: 978-249-5348
FAX: 978-249-4784
800-323-7706

56 HILL ROAD
FRANKLIN, NH 03235
OFF: 603-934-4665
FAX: 603-934-6260

134 LEVERETT ROAD
SHUTESBURY, MA 01072
413-259-1414

April 1st, 2022

Town of Orange
PO Box 37
Canaan, NH 03741

To Selectman/Mayor/or Town Manager

Please be advised, that New Hampshire Electric Co-op (NHE CO-OP) and its contractor consultant, Vegetation Control Service, Inc. (VCS) intends to selectively apply herbicides to undesirable vegetation growing within power line rights of way corridors located in your community. This treatment will be performed by experienced, State of NH Certified Applicators, authorized by Special Permit #044, issued by the NH Division of Pesticide Control. In compliance with State of NH, Code of Administrative Rules, Pes 505.06 regarding public notification of herbicide treatments to rights of way, we have enclosed the following for your information and review.

- Copies of the "Herbicide Use Notification", including the identification of the power lines scheduled for treatment, herbicide products to be used and an attached returnable coupon for those individuals who desire personal notification or may want to advise us of a sensitive area of concern near the right of way.
- Copy of the topographical maps, depicting the location of the power line, rights of way intended for treatment.
- Copies of (NHE-CO-OP's) door hanger notification of herbicide spraying to be left with each power line right of way abutter along with a copy of the "Herbicide Use Notification".

In addition to this enclosed notice, the "Herbicide Use Notice" will be published in a newspaper of State wide circulation and those of local circulation, to help inform the public. We encourage you however,

to post this notice in customary places of public notification including town websites as you deem appropriate.

We would also request that you submit a copy of this notification to your local Health Board or Water Department

If you have any questions, comments or concerns about the actual herbicide treatment program, please feel free to contact me at **603-325-3227**, during the hours of 8:00 am and 4:00 pm, Monday thru Friday.

If you have questions concerning NHE CO-OP's lines, poles, facilities or general information relating to utility issues, please contact:

Brad Arnesen, Utility Arborist

603-536-8688

New Hampshire Electric Co-op

579 Tenney Mountain Highway

Plymouth, NH 03264

Telephone: Monday thru Friday, 6:00 am to 3:30 pm

On behalf of NHE CO-OP, we thank you in advance for your assistance and cooperation with this project.

Sincerely,

Mike Couture, Vegetation Control Service, Inc.

NHEC Project Manager

1-603-325-3227

Enclosed (s):

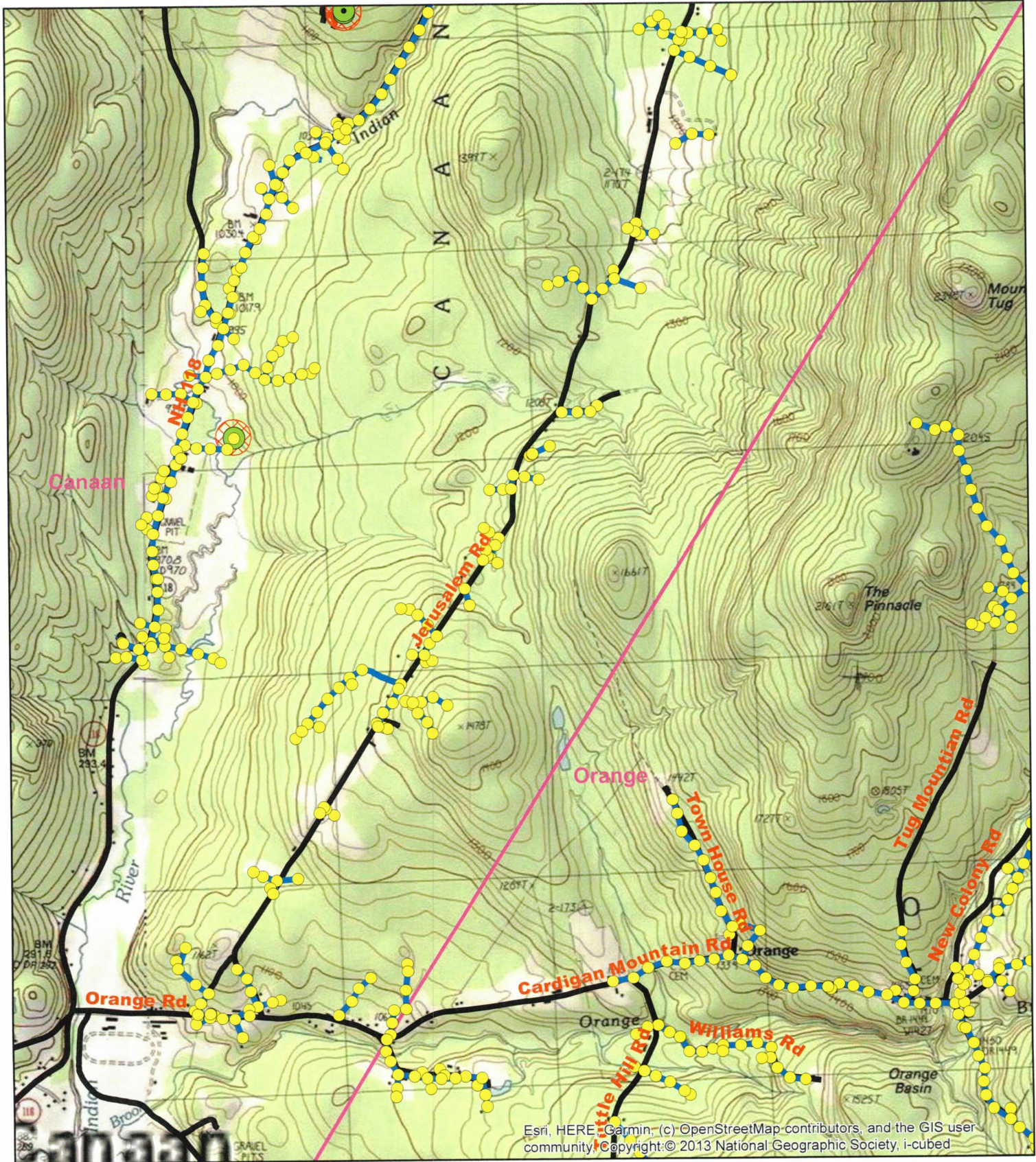
- Herbicide Use Notification/Return Coupons
- Topographical Map
- NHE CO-OP Abutter Door Hangers

2012 RU12AT
 Canaan, Dorchester, Grafton, Orange
 2022 Treatment Map
 140.98 Potential Acres
 Plymouth District

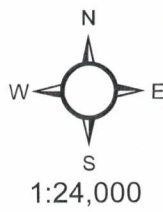


Legend

- 2012-RU12AT_Cannan_Dorchester_Grafton_Orange_Poles
- 2022 Public Wells
- 2022 Private Wells
- 2012-RU12AT_Cannan_Dorchester_Grafton_Orange_Spans
- 2022 Roadside No Spray Segments
- 2022 Public Well Buffers
- 2022 Public Surface Water Buffer

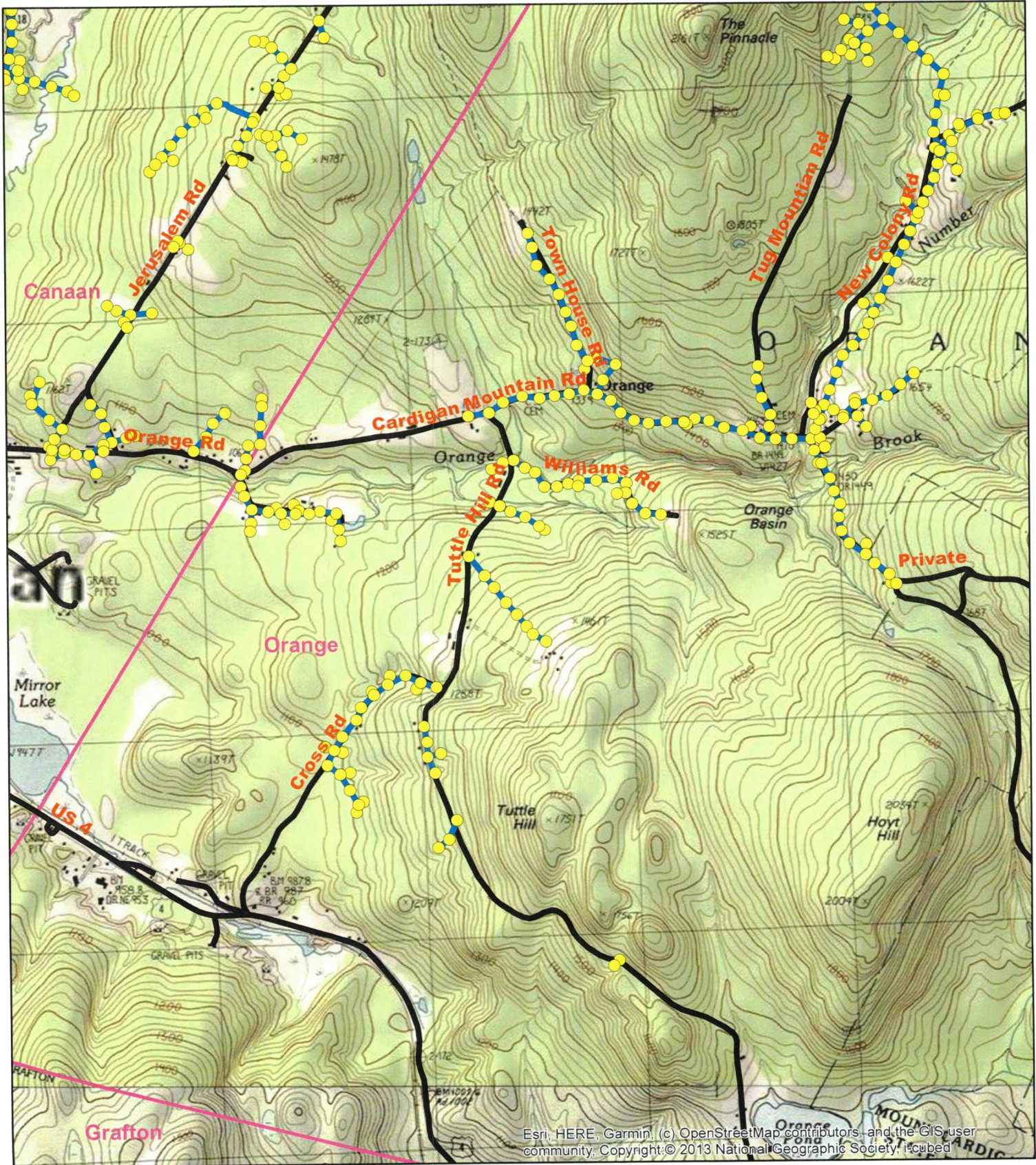


2012-RU12AT
 Canaan, Dorchester, Grafton, Orange
 2022 Treatment Map
 140.98 Potential Acres
 Plymouth District

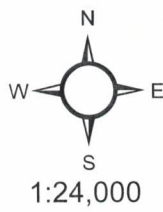


Legend

- 2012-RU12AT_Canaan_Dorchester_Grafton_Orange_Poles
- 2022 Public Wells
- 2022 Private Wells
- 2012-RU12AT_Canaan_Dorchester_Grafton_Orange_Spans
- 2022 Roadside No Spray Segments
- 2022 Public Well Buffers
- 2022 Public Surface Water Buffer

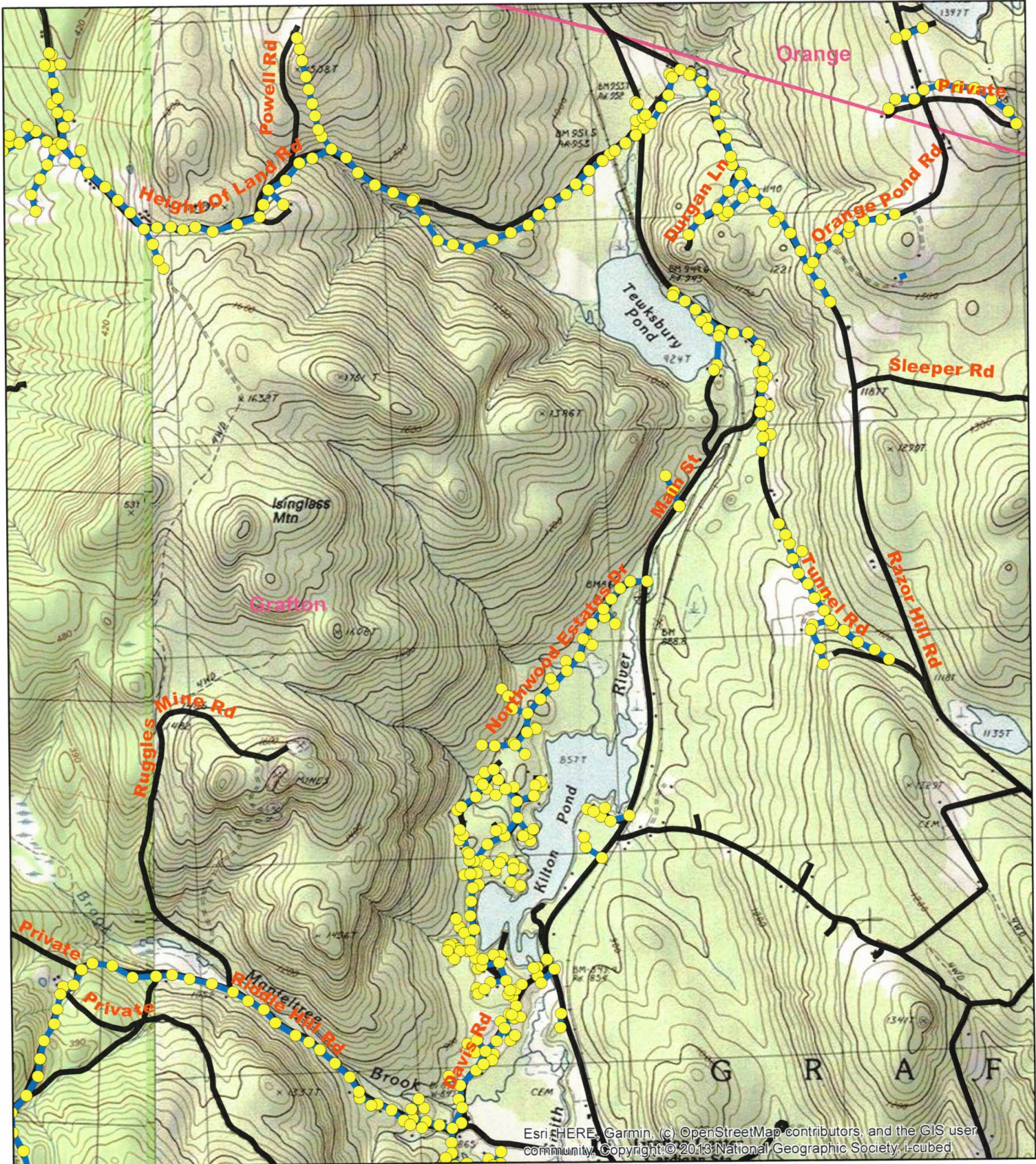


2012-RU12AT
 Cannan, Dorchester, Grafton Orange
 2022 Treatment Map
 140.98 Potential Acres
 Plymouth District

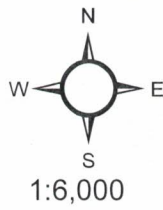


Legend

- 2012-RU12AT_Cannan_Dorchester_Grafton_Orange_Poles
- 2022 Public Wells
- 2022 Private Wells
- 2012-RU12AT_Cannan_Dorchester_Grafton_Orange_Spans
- 2022 Roadside No Spray Segments
- 2022 Public Well Buffers
- 2022 Public Surface Water Buffer

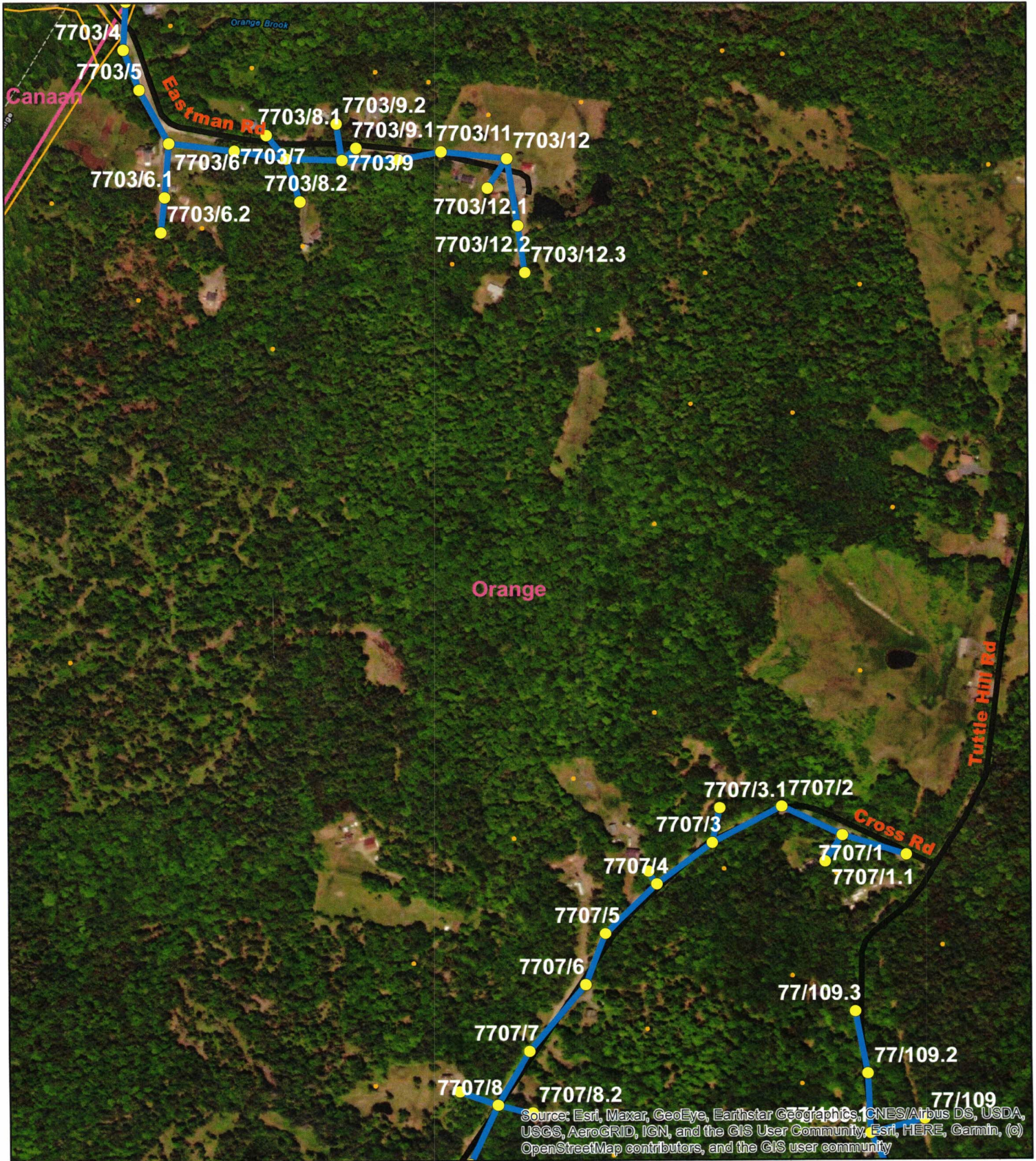


2012-RU12AT
 Cannan, Dorchester, Grafton Orange
 2022 Treatment Map
 140.98 Potential Acres
 Plymouth District



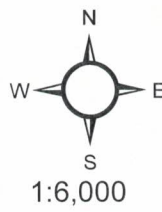
Legend

- 2012-RU12AT_Cannan_Dorchester_Grafton_Orange_Poles
- 2022 Public Wells
- 2022 Private Wells
- 2012-RU12AT_Cannan_Dorchester_Grafton_Orange_Spans
- 2022 Roadside No Spray Segments
- NH_Parcels_within_one_mile_of_gs_span
- 2022 Public Well Buffers
- 2022 Public Surface Water Buffer



Source: Esri, Maxar, GeoEye, Earthstar Geographics, CNES/Airbus DS, USDA, USGS, AeroGRID, IGN, and the GIS User Community, Esri, HERE, Garmin, (c) OpenStreetMap contributors, and the GIS user community

2012-RU12AT
 Cannan, Dorchester, Grafton Orange
 2022 Treatment Map
 140.98 Potential Acres
 Plymouth District

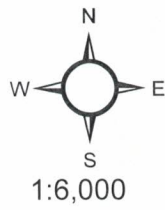


- Legend**
- 2012-RU12AT_Cannan_Dorchester_Grafton_Orange_Poles
 - 2022 Public Wells
 - 2022 Private Wells
 - 2012-RU12AT_Cannan_Dorchester_Grafton_Orange_Spans
 - 2022 Roadside No Spray Segments
 - NH_Parcels_within_one_mile_of_gs_span
 - ▨ 2022 Public Well Buffers
 - ▨ 2022 Public Surface Water Buffer



Source: Esri, Maxar, GeoEye, Earthstar Geographics, CNES/Airbus DS, USDA, USGS, AeroGRID, IGN, and the GIS User Community, Esri, HERE, Garmin, (c) OpenStreetMap contributors, and the GIS user community

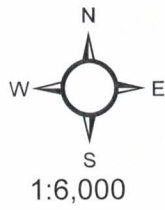
2012-RU12AT
 Cannan, Dorchester, Grafton Orange
 2022 Treatment Map
 140.98 Potential Acres
 Plymouth District



- Legend**
- 2012-RU12AT_Cannan_Dorchester_Grafton_Orange_Poles
 - 2022 Public Wells
 - 2022 Private Wells
 - 2012-RU12AT_Cannan_Dorchester_Grafton_Orange_Spans
 - 2022 Roadside No Spray Segments
 - NH_Parcels_within_one_mile_of_gs_span
 - 2022 Public Well Buffers
 - 2022 Public Surface Water Buffer



2012-RU12AT
 Cannan, Dorchester, Grafton Orange
 2022 Treatment Map
 140.98 Potential Acres
 Plymouth District



- Legend**
- 2012-RU12AT_Cannan_Dorchester_Grafton_Orange_Poles
 - 2022 Public Wells
 - 2022 Private Wells
 - 2012-RU12AT_Cannan_Dorchester_Grafton_Orange_Spans
 - 2022 Roadside No Spray Segments
 - NH_Parcels_within_one_mile_of_gs_span
 - 2022 Public Well Buffers
 - 2022 Public Surface Water Buffer



Source: Esri, Maxar, GeoEye, Earthstar Geographics, CNES/Airbus DS, USDA, USGS, AeroGRID, IGN, and the GIS User Community, Esri, HERE, Garmin, (c) OpenStreetMap contributors, and the GIS user community

2012-RU12AT
 Cannan, Dorchester, Grafton Orange
 2022 Treatment Map
 140.98 Potential Acres
 Plymouth District



1:6,000



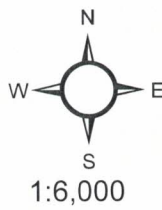
Legend

- 2012-RU12AT_Cannan_Dorchester_Grafton_Orange_Poles
- 2022 Public Wells
- 2022 Private Wells
- 2012-RU12AT_Cannan_Dorchester_Grafton_Orange_Spans
- 2022 Roadside No Spray Segments
- NH_Parcels_within_one_mile_of_gs_span
- 2022 Public Well Buffers
- 2022 Public Surface Water Buffer



Source: Esri, Maxar, GeoEye, Earthstar Geographics, CNES/Airbus DS, USDA, USGS, AeroGRID, IGN, and the GIS User Community, Esri, HERE, Garmin, (c) OpenStreetMap contributors, and the GIS user community

2012-RU12AT
 Cannan, Dorchester, Grafton Orange
 2022 Treatment Map
 140.98 Potential Acres
 Plymouth District

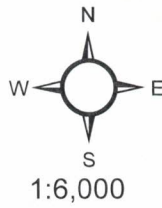


- Legend**
- 2012-RU12AT_Cannan_Dorchester_Grafton_Orange_Poles
 - 2022 Public Wells
 - 2022 Private Wells
 - 2012-RU12AT_Cannan_Dorchester_Grafton_Orange_Spans
 - 2022 Roadside No Spray Segments
 - NH_Parcels_within_one_mile_of_gs_span
 - 2022 Public Well Buffers
 - 2022 Public Surface Water Buffer



Source: Esri, Maxar, GeoEye, Earthstar Geographics, CNES/Airbus DS, USDA, USGS, AeroGRID, IGN, and the GIS User Community, Esri, HERE, Garmin, (c) OpenStreetMap contributors, and the GIS user community

2012-RU12AT
 Cannan, Dorchester, Grafton Orange
 2022 Treatment Map
 140.98 Potential Acres
 Plymouth District

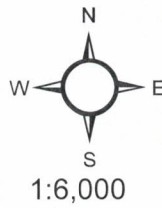


- Legend**
- 2012-RU12AT_Cannan_Dorchester_Grafton_Orange_Poles
 - 2022 Public Wells
 - 2022 Private Wells
 - 2012-RU12AT_Cannan_Dorchester_Grafton_Orange_Spans
 - 2022 Roadside No Spray Segments
 - NH_Parcels_within_one_mile_of_gs_span
 - 2022 Public Well Buffers
 - 2022 Public Surface Water Buffer



Source: Esri, Maxar, GeoEye, Earthstar Geographics, CNES/Airbus DS, USDA, USGS, AeroGRID, IGN, and the GIS User Community, Esri, HERE, Garmin, (c) OpenStreetMap contributors, and the GIS user community

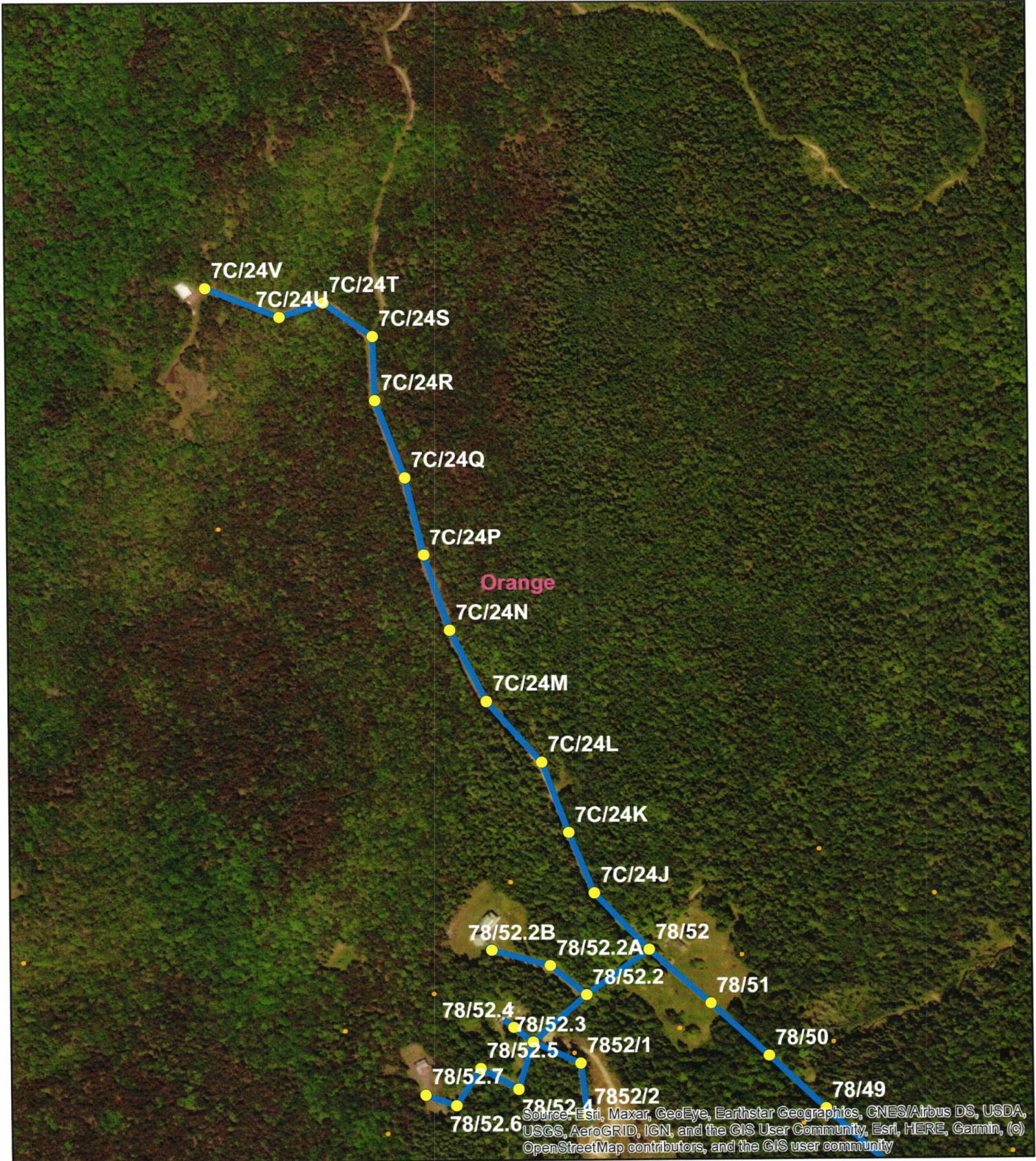
2012-RU12AT
 Cannan, Dorchester, Grafton Orange
 2022 Treatment Map
 140.98 Potential Acres
 Plymouth District



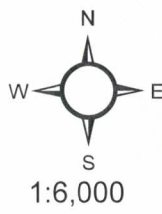
1:6,000



- Legend**
- 2012-RU12AT_Cannan_Dorchester_Grafton_Orange_Poles
 - 2022 Public Wells
 - 2022 Private Wells
 - 2012-RU12AT_Cannan_Dorchester_Grafton_Orange_Spans
 - 2022 Roadside No Spray Segments
 - NH_Parcels_within_one_mile_of_gs_span
 - 2022 Public Well Buffers
 - 2022 Public Surface Water Buffer



2012-RU12AT
Cannan, Dorchester, Grafton Orange
2022 Treatment Map
140.98 Potential Acres
Plymouth District



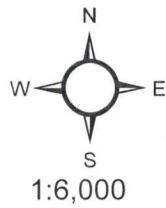
Legend

- 2012-RU12AT_Cannan_Dorchester_Grafton_Orange_Poles
- 2022 Public Wells
- 2022 Private Wells
- 2012-RU12AT_Cannan_Dorchester_Grafton_Orange_Spans
- 2022 Roadside No Spray Segments
- NH_Parcels_within_one_mile_of_gs_span
- 2022 Public Well Buffers
- 2022 Public Surface Water Buffer



Source: Esri, Maxar, GeoEye, Earthstar Geographics, CNES/Airbus DS, USDA, USGS, AeroGRID, IGN, and the GIS User Community, Esri, HERE, Garmin, (c) OpenStreetMap contributors, and the GIS user community

2012-RU12AT
 Cannan, Dorchester, Grafton Orange
 2022 Treatment Map
 140.98 Potential Acres
 Plymouth District

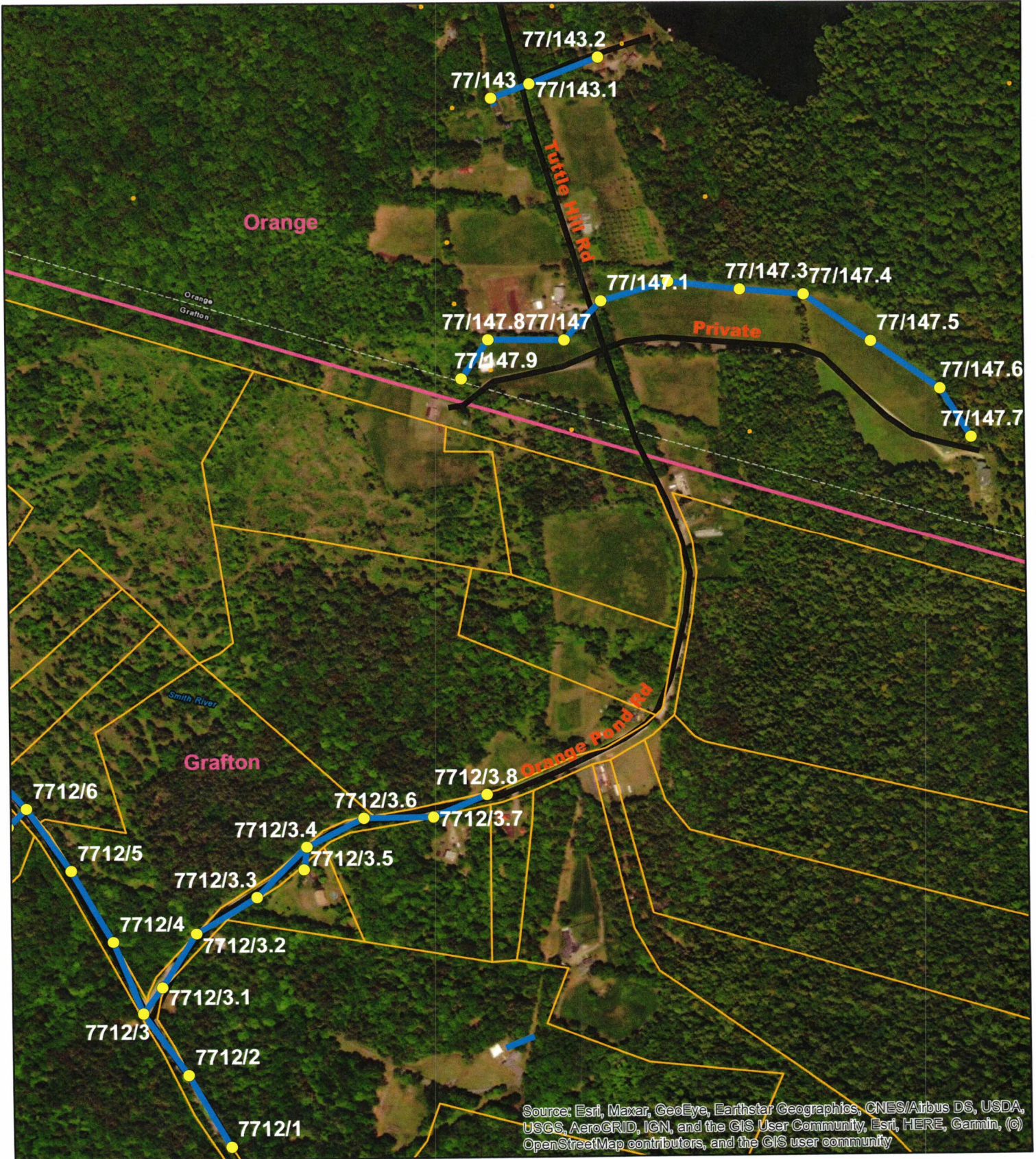


1:6,000



Legend

- 2012-RU12AT_Cannan_Dorchester_Grafton_Orange_Poles
- 2022 Public Wells
- 2022 Private Wells
- 2012-RU12AT_Cannan_Dorchester_Grafton_Orange_Spans
- 2022 Roadside No Spray Segments
- NH_Parcels_within_one_mile_of_gs_span
- 2022 Public Well Buffers
- 2022 Public Surface Water Buffer



Source: Esri, Maxar, GeoEye, Earthstar Geographics, CNES/Airbus DS, USDA, USGS, AeroGRID, IGN, and the GIS User Community, Esri, HERE, Garmin, (c) OpenStreetMap contributors, and the GIS user community